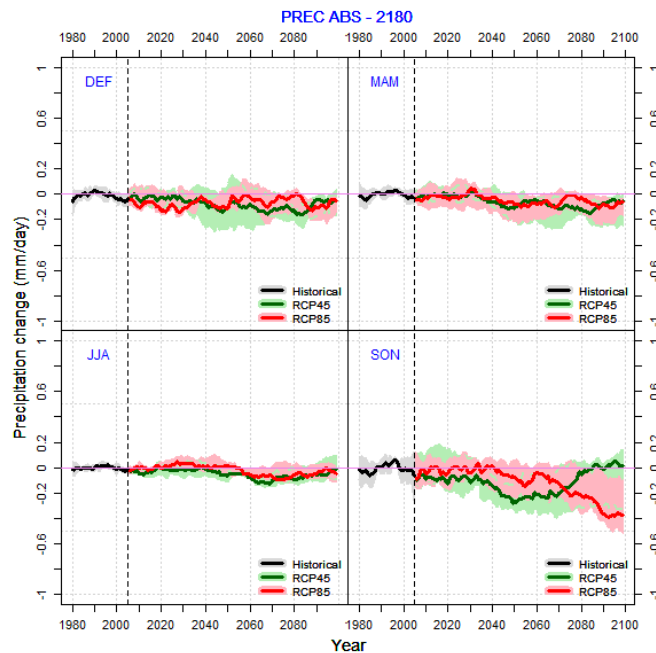
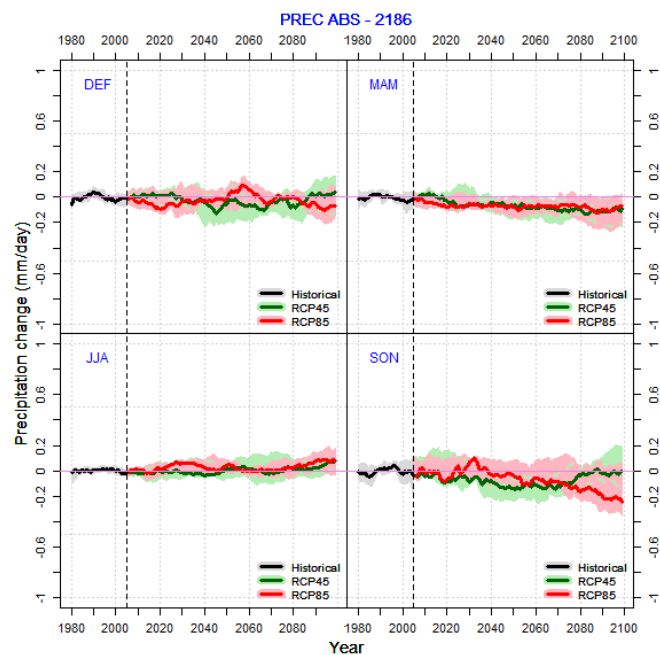


## Supplementary Material.

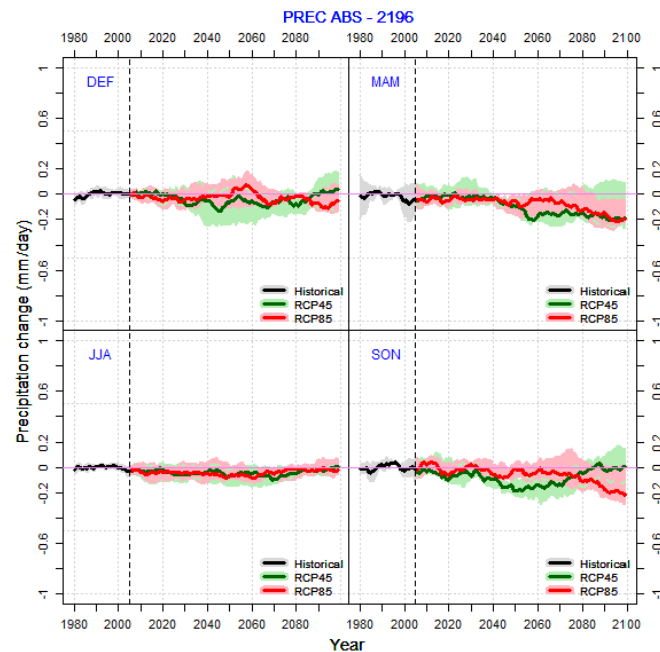
**Figures S1 to S24**, show the expected relative seasonal changes in daily absolute precipitation (mm/day) and daily mean temperature (°C) throughout the XXI century per meteorological station and each of the climate change studied scenarios (RCP4.5 and RCP8.5). Results are shown as 30-years moving average against the 1971-2000 average (used as a reference). The vertical dotted line indicates the end of the historical experiment (black) and the start of the RCPs. Thick lines show the median of the values for all models; the shaded area indicates ranges from the 10<sup>th</sup> to 90<sup>th</sup> percentiles. Seasons are indicated by the initial letter of their months.



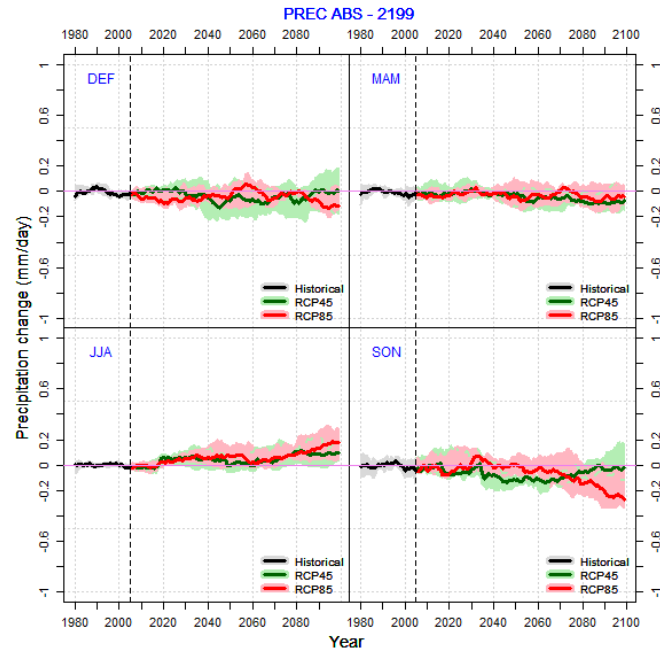
**Figure S1.** Seasonal changes in daily absolute precipitation in the Matabuena meteorological station (code 2180).



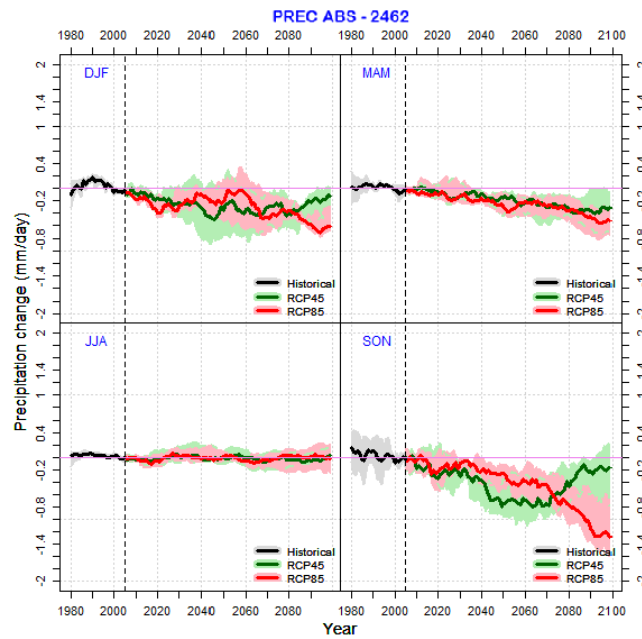
**Figure S2.** Seasonal changes in daily absolute precipitation in the Turégano meteorological station (code 2186).



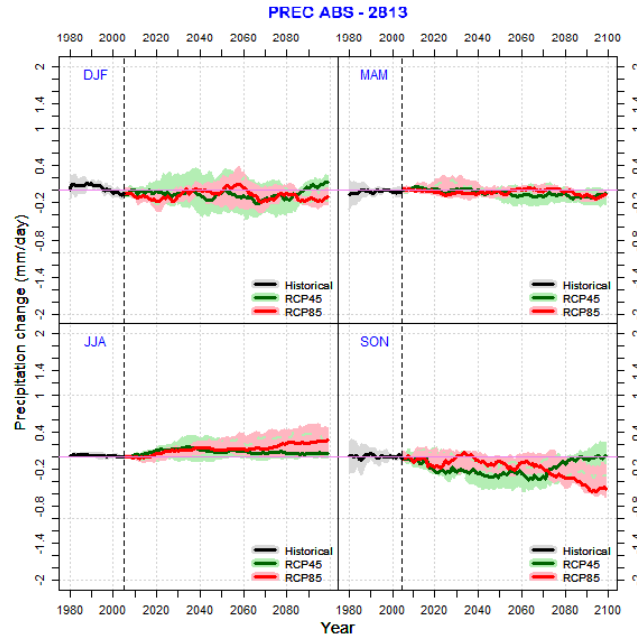
**Figure S3.** Seasonal changes in daily absolute precipitation in the Torreiglesias meteorological station (code 2196).



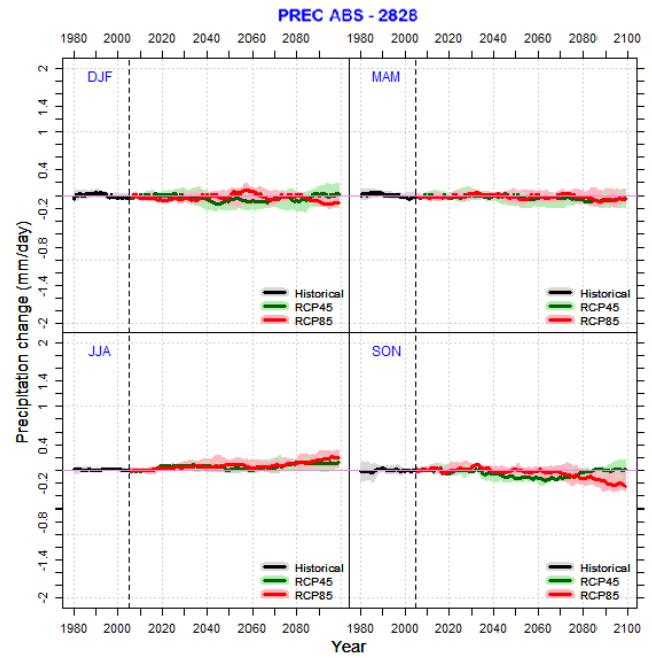
**Figure S4.** Seasonal changes in daily absolute precipitation in the Cantimpalos meteorological station (code 2199).



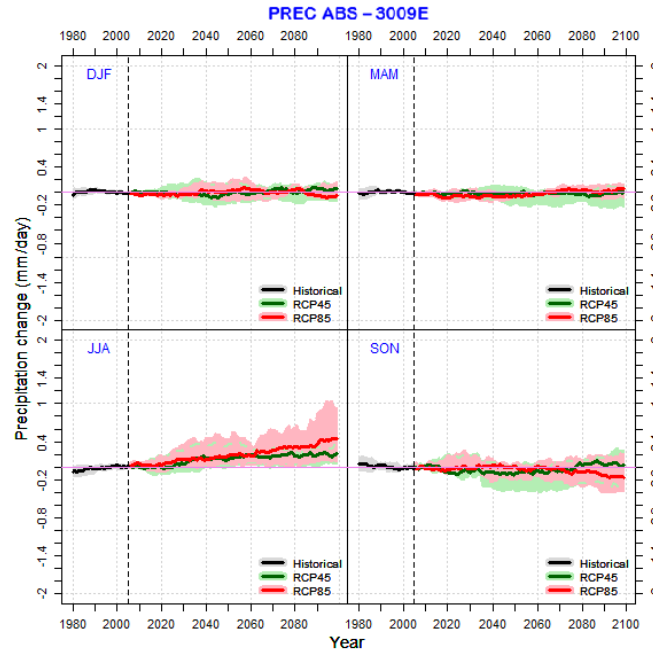
**Figure S5.** Seasonal changes in daily absolute precipitation in the Puerto de Navacerrada meteorological station (code 2462).



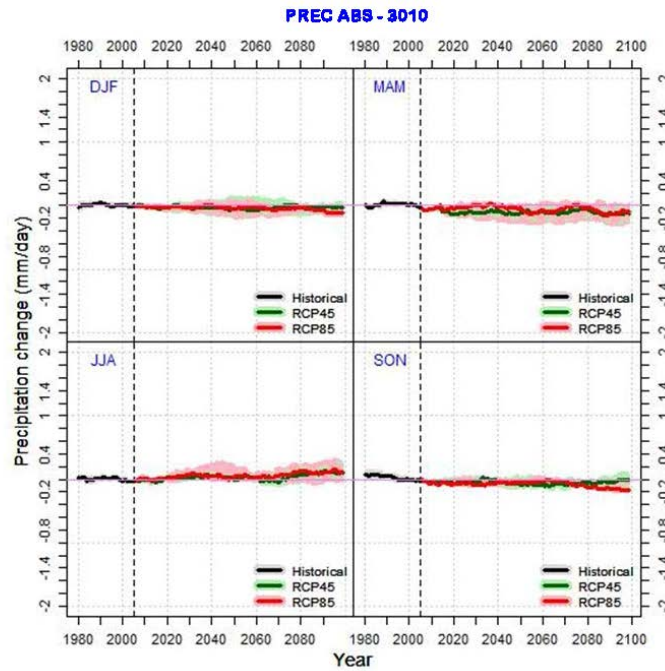
**Figure S6.** Seasonal changes in daily absolute precipitation in the Navacepeda de Tormes meteorological station (code 2813).



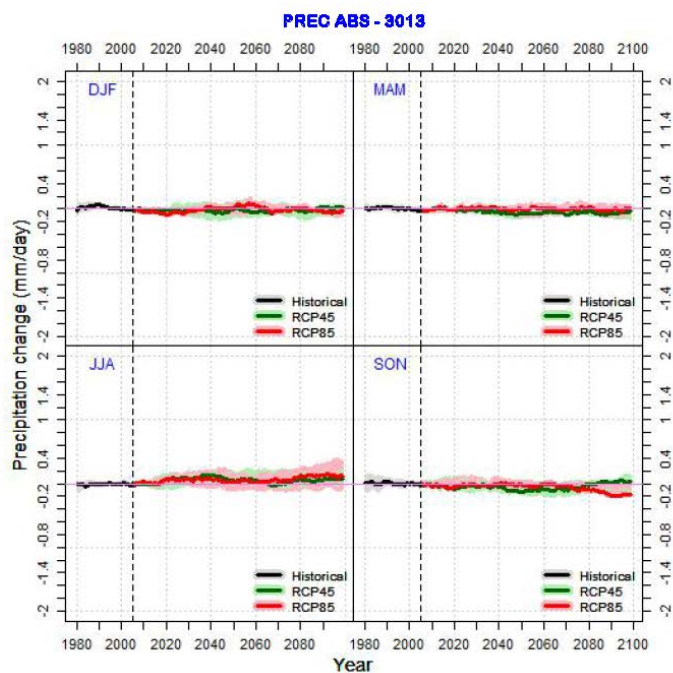
**Figure S7.** Seasonal changes in daily absolute precipitation in the El Barco de Ávila meteorological station (code 2828).



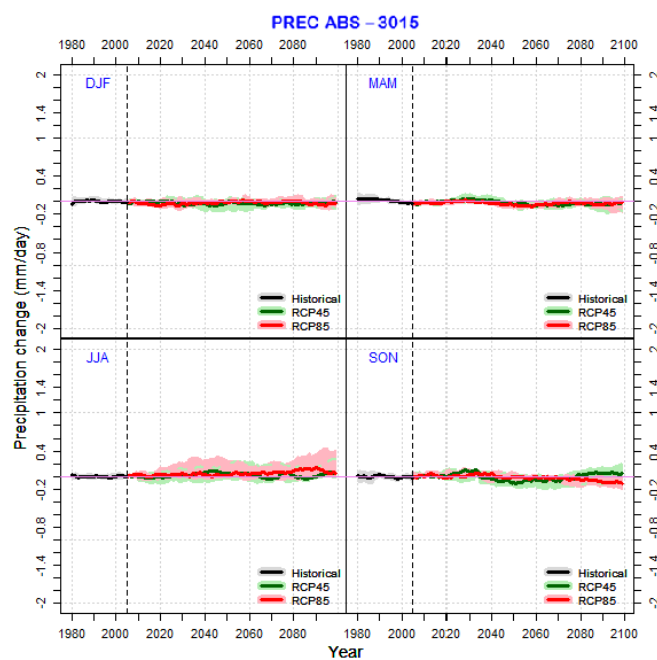
**Figure S8.** Seasonal changes in daily absolute precipitation in Orihuela del Tremedal meteorological station (code 3009E).



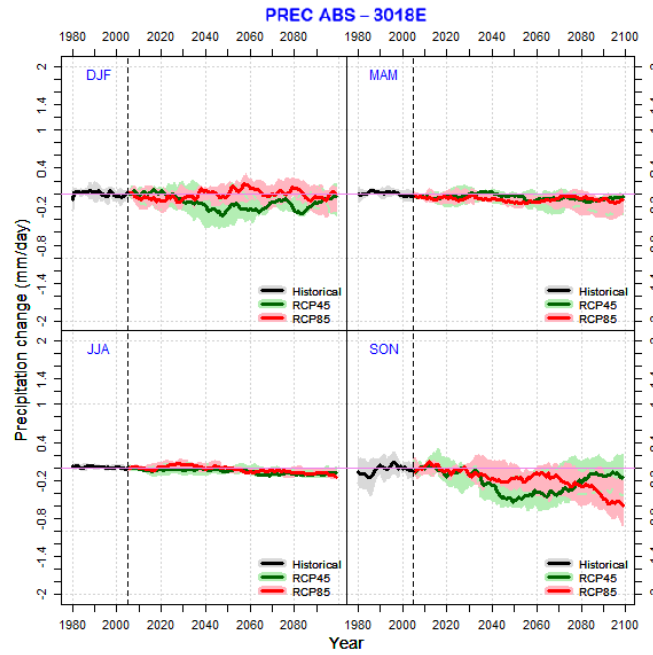
**Figure S9.** Seasonal changes in daily absolute precipitation in Ródenas meteorological station (code 3009E).



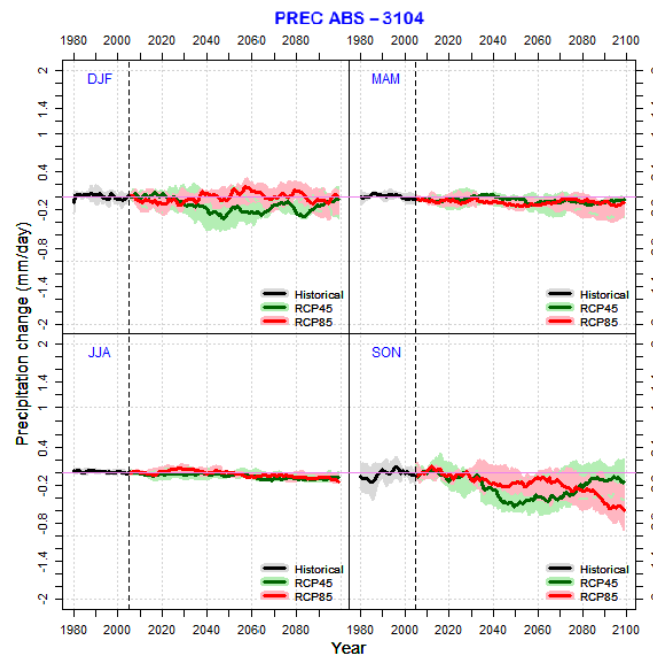
**Figure S10.** Seasonal changes in daily absolute precipitation in Molina de Aragón meteorological station (code 3009E).



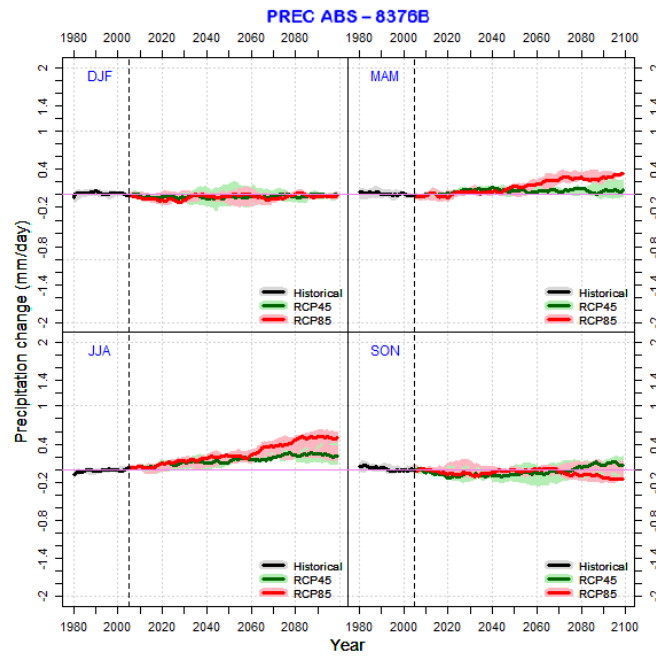
**Figure S11.** Seasonal changes in daily absolute precipitation in Corduente meteorological station (code 3015).



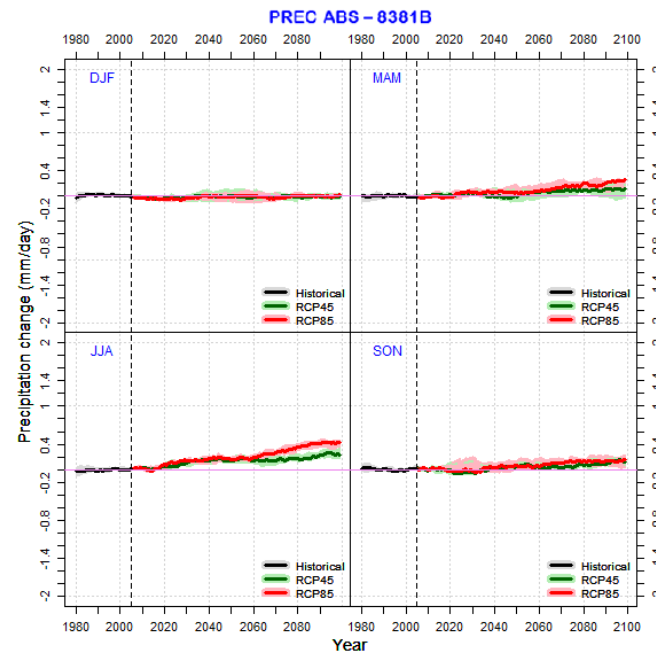
**Figure S12.** Seasonal changes in daily absolute precipitation in Aragoncillo meteorological station (code 3018E).



**Figure S13.** Seasonal changes in daily absolute precipitation in Rascafría-El Paular meteorological station (code 3104).

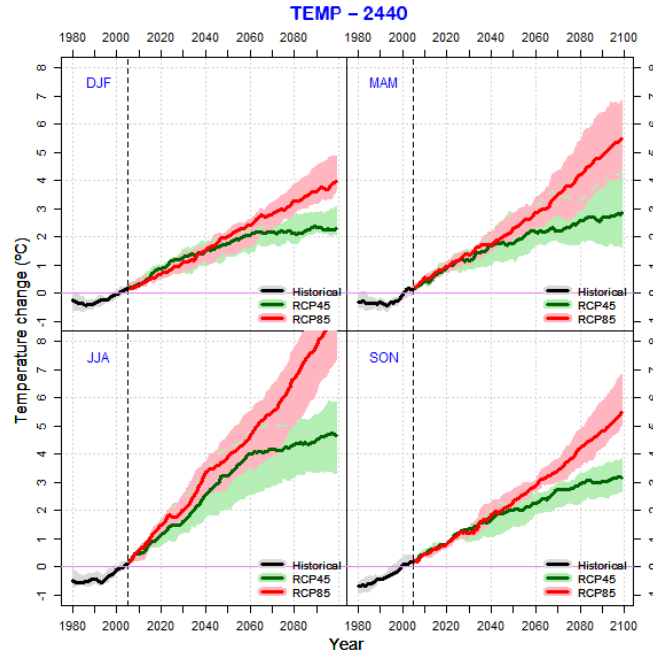


**Figure S14.** Seasonal changes in daily absolute precipitation in Jabaloyas meteorological station (code 8376B).

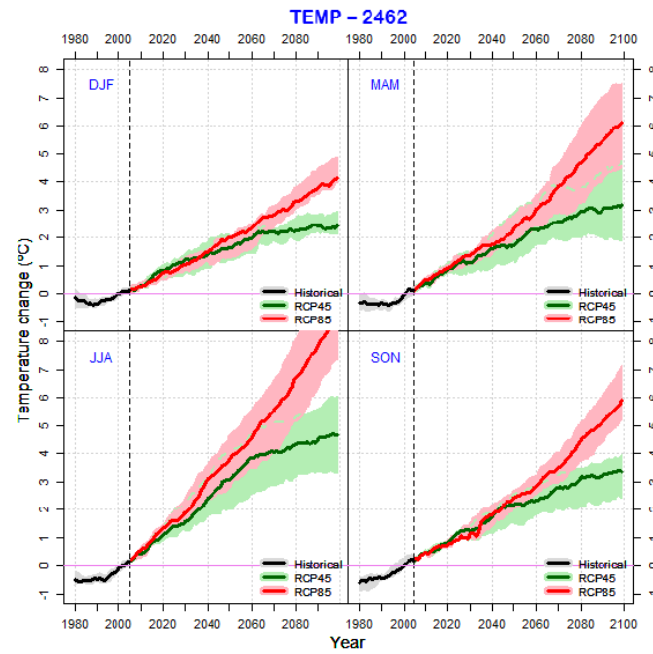


**Figure S15.** Seasonal changes in daily absolute precipitation in Ademuz-Agro meteorological station (code 8381B).

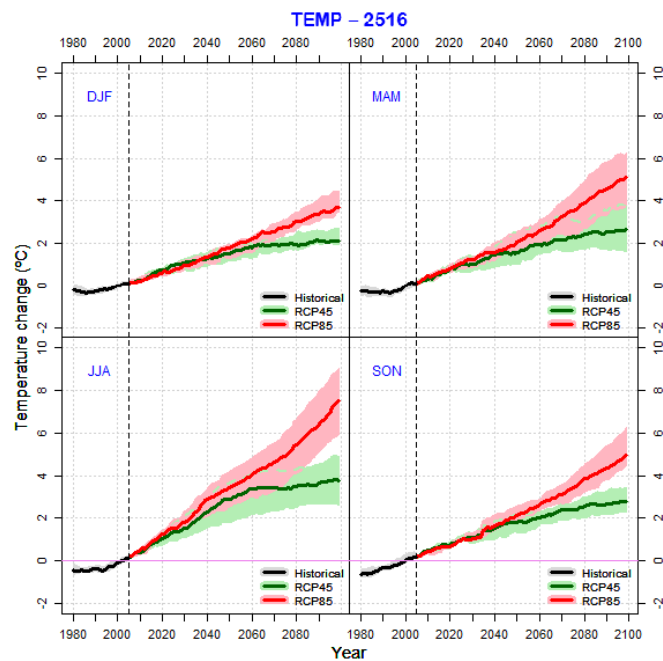




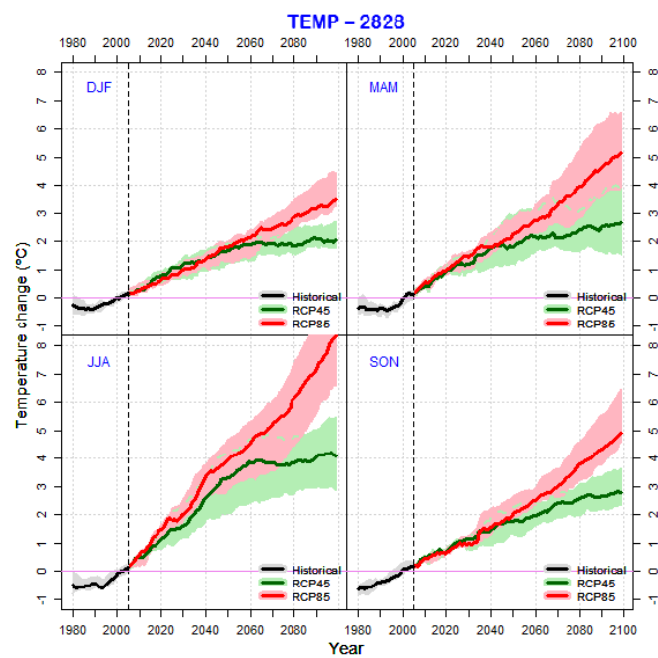
**Figure S16.** Seasonal changes in daily mean temperature in Aldea del Rey Niño meteorological station (code 2440).



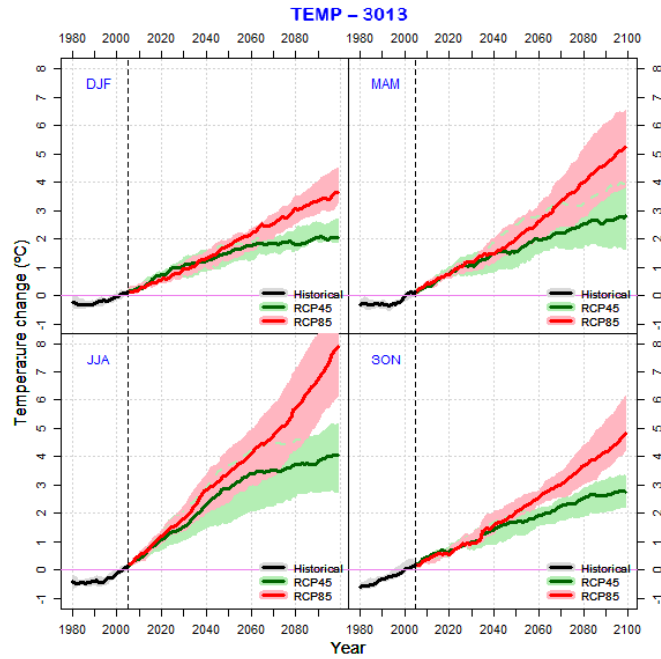
**Figure S17.** Seasonal changes in daily mean temperature in Puerto de Navacerrada meteorological station (code 2462).



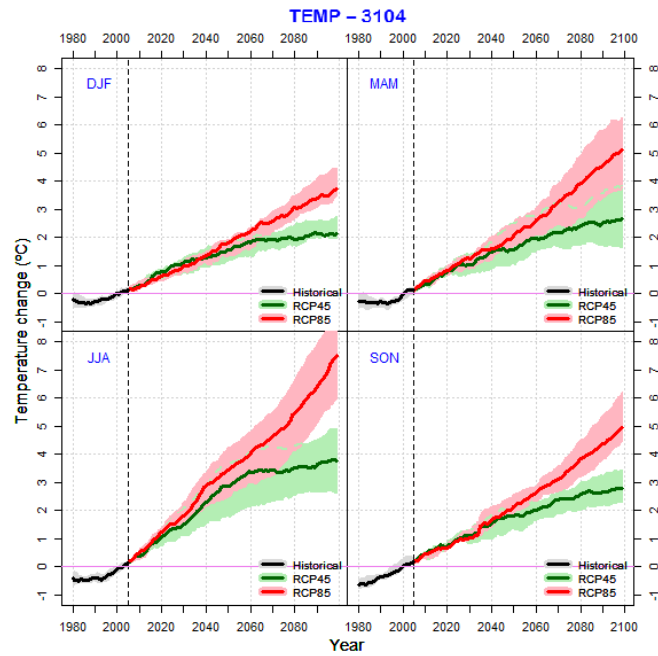
**Figure S18.** Seasonal changes in daily mean temperature in Ataquines meteorological station (code 2516).



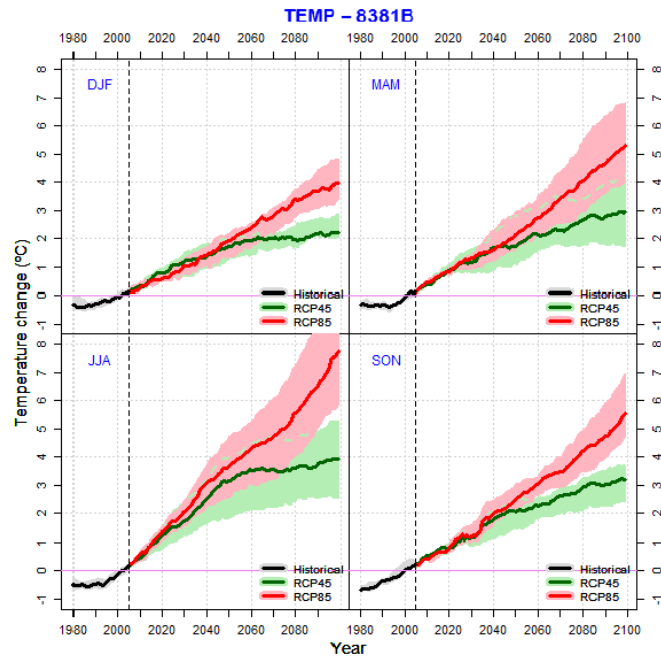
**Figure S19.** Seasonal changes in daily mean temperature in El Barco de Ávila meteorological station (code 2828).



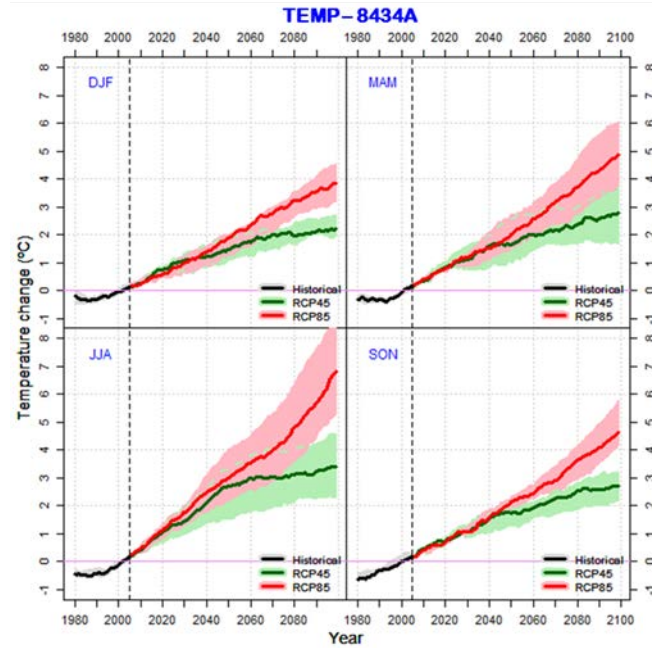
**Figure S20.** Seasonal changes in daily mean temperature in Molina de Aragón meteorological station (code 3013).



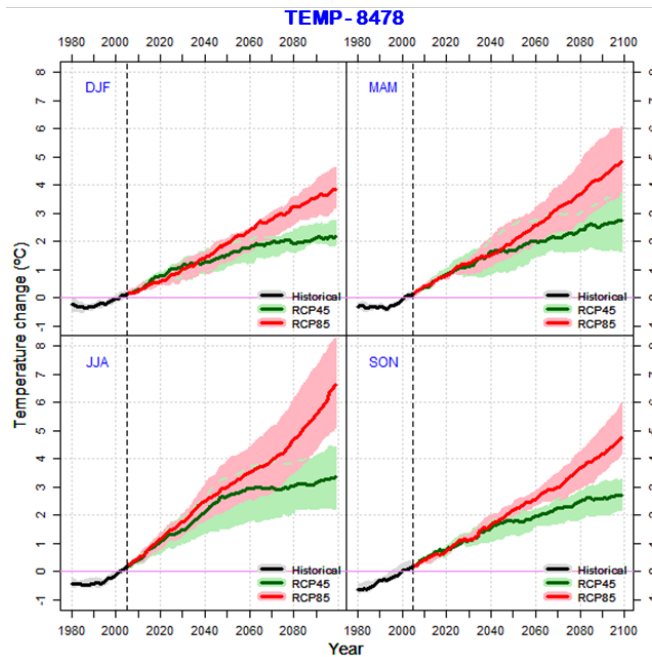
**Figure S21.** Seasonal changes in daily mean temperature in Rascafría-El Paular meteorological station (code 3104).



**Figure S22.** Seasonal changes in daily mean temperature in Ademuz-Agro meteorological station (code 8381B).



**Figure S23.** Seasonal changes in daily mean temperature in Viver-Agro meteorological station (code 8434A).



**Figure S24.** Seasonal changes in daily mean temperature in Arañuel meteorological station (code 8478).